

It's time to start school!



BAY VISTA
FUNDAMENTAL
EST. 1997

Whether you have chosen to come to the school building or learn online, we are excited to have our Jaguars back with us for another year of learning. While things will be different this year, we will adjust to the changes and be better than ever! Please see our webpage at <https://www.pcsb.org/bayvista-es> for teacher contact information and be sure to listen out for the parent messenger calls and emails from Principal Hall.



Families that are doing **MyPCS** for the first 9 weeks, please reach out to your assigned teacher first for any support with Canvas or technology issues. For those of you who have chosen to return to the school building, please read the following procedure changes for the new school year.

- School will start on August 24. **Our times will continue to be 8:15 to 2:25. The campus opens for students at 7:45.** Due to social distancing, students & parents will no longer be able to congregate in the front of the school. **Therefore, parents may not gather or drop students off before 7:45.** The R'Club has before and after care for those that need it. These programs open at 6:30 am.
 - Only school staff should be on campus.
 - Parents, volunteers, or mentors are not permitted on campus during arrival or during the day.
 - All students should arrive via the car circle unless a walker.
 - Students should not be on campus prior to 7:45 a.m. It is imperative that all families respect this request.
 - All adults **MUST** stay in their car while dropping off students.
 - There are no safety patrols for the first semester.
- Upon arrival at 7:45-8:05, students will enter campus through their assigned grade level gate which is color-coded. If they are having breakfast, students will stop at one of the Grab and Go carts to pick up a pre-packaged meal and report to the covered court where they will sit at a designated socially distanced marked spot.
- Students arriving after 8:05 who are eating breakfast will pick up from a Grab and Go cart and report directly to class. **Breakfast concludes at 8:10.**
- Students **MUST BE IN CLASS BY 8:15** to avoid a tardy.
- Please refer to the color-coded arrival map for your child's assigned gate. For families with multiple students, please drop your children off at the youngest student's gate.
- Students will receive colored bands for their backpacks as a reminder of their assigned gate for arrival times. It is imperative that students only enter campus at their assigned gates as this will support our efforts for social distancing while students move freely on campus.

- **Green Entrance** - Kindergarten-students will enter the kindergarten building. (GREEN Entrance)
- If they are having breakfast, a cart will be stationed between the K buildings for those students.
- Students arriving prior to 8:05 will sit socially distanced between the two kindergarten buildings.
- Staff members will support K students during arrival and breakfast.

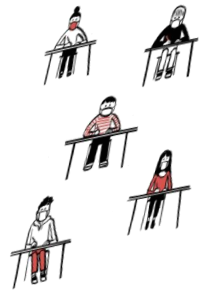
■ **R'Club**-Students will enter the cafeteria directly from the car circle.

■ **Blue Entrance** – 1st , 3rd, and 4th grade (new gate between main bldg. and K bldg.)

■ **Purple Entrance / Cafeteria Gate** - 2nd and 5th grade

■ **Orange Entrance/58th Avenue** -58th Avenue – Vans

- **Masks** – Students and staff will be **required to wear a mask**. The school will provide reusable cloth (washable) masks and a lanyard for each student. I suggest that your child have their own mask for the first day of school that they feel comfortable wearing. Any child not wearing a mask will be provided one.
- **Specials Classes** – Students will continue to have art, music and PE weekly along with recess. Social distancing will be practiced and monitored and no equipment sharing will be permitted.-



- **Daily Learning** - teachers will cover all the state standards required of each grade level. We are not changing the curriculum. Students will still be provided the high-quality instruction you have come to know from Bay Vista. Students will still receive direct and small group instruction and modified ways of collaborating safely.

- **In case of emergencies**, please ensure that you have the correct contact information on file to stay informed about what's occurring at your child's school and in the district. Parents and guardians can receive phone calls and emails. Please check that your contact info (phone numbers/email addresses) are correct in focus so you don't miss my weekly communications.



- Parents may go to <https://www.pcsb.org/mypcsonline> to learn more information about online learning, how to correct simple technical issues, and find other valuable resources. We highly recommend ALL families check out these resources and familiarize themselves with Canvas. Face to Face classes will be using it as a resource as well if were necessary to move all students to MyPCS online.

 **Parent/Family Information**

Parent/Family Canvas Training	Parent/Family Canvas Login
Resources	Technical Support
Take a Tour of MyPCS Online	

The Clinic - If your child is not feeling well, please keep them home. If a student gets sick during the school day, our nurse will assess your child as in the past and consult with you. If a student exhibits illness beyond the normal stomachache or minor injury, we will request that you pick your child up. **I strongly encourage you to make back-up plans for pick up and provide the front office with several people for us to contact on your behalf.** Students will be isolated if they exhibit Covid -19 symptoms and will only be released to a parent or designee. **They will not be able to be released to an aftercare program or on an after-school bus**



- **Cleaning** – We have developed a cleaning schedule that allows for daily cleaning/disinfecting of the school building and high touch surfaces throughout the day. Supplies will be provided in each classroom to allow for the cleaning of workspaces by scholars if they choose. These supplies will be non-irritant chemicals that do not require a PPE. Frequent handwashing will be embedded into the day as well as access to hand sanitizer when needed.
- **Visitors** – For the first 9 weeks, **we are not allowing any visitors on campus that do not have essential business for the operation of the school.** Unfortunately, this means that we cannot allow parents or families to visit for lunch. Volunteer opportunities and mentoring will all be done online at this time. For more information about how you can still be involved in the school, please contact Allison Redd at reda@pcsb.org. Also, all extracurricular activities have been suspended for the first 9 weeks. This does not include after school tutoring. More information will be coming soon about the Extended Learning Program or ELP.



- **First week of school** – We will have staff to help your child out of your car and to their class. The same is true for our morning van riders. **PLEASE do not park and walk your child in.** We kindly ask that you use the carline to drop off your child. I know this is scary for our first-time students and not the way we normally do things. However, we will have plenty of adults to help your child to class.



- **Lunch** – Lunch will be eaten in the cafeteria and we will students will be socially distanced. Reminders are visible and provide directions for moving safely in the cafeteria. Hand sanitizer will be on hand as well as plexiglass dividers, as needed.

- **Dismissal** – Please be patient as we try to release the children as safely and efficiently as possible with social distancing. Like the start of every school year, dismissal can seem a bit chaotic. As your principal, I truly appreciate everyone's smile and understanding. Please remain in your car during dismissal.
- Students will be dismissed through the car circle as a "car rider" unless they are a "walker" or a "van rider".
- **The walk-up gate will not be used.** All parents must use the car circle to drop-off and pick-up students daily. Staff will not be at the front of the school to accommodate walk-ups and parents are not allowed to gather on campus.
- Please inform your child's teacher of the way your child is going home.
- You will be given a name tag sign to display/hang tag to assist staff with calling for your child as you arrive in the car line for dismissal each day. It is imperative that your name tag sign is hanging from your rear view mirror upon arrival.
- **Cars may not line up in the car circle prior to 2:00 p.m.**
- For more information on PCS Re-Opening, please click this link to the plan <https://www.pcsb.org/domain/11723>



Thank you for your support and for entrusting Bay Vista to educating your student. Stay safe and let's have a great year.

Ms. Hall, Principal